



Rooted in the
HEART OF LUXURY

03	INTRODUCTION
04	CREDENTIALS
04	MANUFACTURING FACILITIES
04	QUALITY ASSURANCE
05	CONCEPT AND DESIGN
05	TENT FEATURES
06	FULLY INTEGRATED TURNKEY SOLUTION
07	CONSTRUCTION AND INSTALLATION
07	MAINTENANCE SERVICE/TRAINING
07	DESIGNED TO IMPRESS
08	LUXURY TENT RANGE
30	MERU TENT RANGE
32	STANDARD LUXURY TENT RANGE
34	PORTFOLIO
44	CONTACT US

Abu Camp - Botswana



“
WORLD-RENOWNED,
 respected & trusted
 ”

INTRODUCTION

Canvas and Tent began manufacturing outstanding quality tents more than 50 years ago, diversifying and expanding over time to meet the changing demands of diverse markets.

Today, it is a world-renowned, respected and trusted group of companies with a global presence. Its prime target market - local and international luxury destination/experiential travel - is served by two dedicated specialist divisions.

BUSHTEC SAFARI A long-established brand

- ◆ conceptualises, creates, designs and supplies innovative, handcrafted, award-winning, luxury tents to safari camps, game reserves, lodges and leisure resorts across six continents.

BUSHTEC CREATIONS Our newest brand launched in 2018

- ◆ advises on, controls and project manages new/expanded tented installations from concept to handover and ongoing maintenance
- ◆ delivers full turnkey solution services to new or existing installations, ensuring that every one is viable, functional, scalable, climate-appropriate, safe, environmentally friendly, eco-sensitive, energy efficient, cost-effective and produces maximum, sustainable ROI.

Designed to impress. Built to last.

CREDENTIALS

- ◆ Over 50 years' experience
- ◆ Winner of various design and other awards
- ◆ ISO 9001:2015 and ISO 14001:2015 certified canvas manufacturing factory
- ◆ B-BBEE certified
- ◆ Integrated Quality & Environmental policy
- ◆ Global portfolio: Africa | Asia | Australia | Europe
Middle East | North America | South America
- ◆ See our online photo gallery at
www.bushtecsafari.co.za - click on **Portfolio**

MANUFACTURING FACILITIES

- ◆ State-of-the art 22 500 m² canvas manufacturing factory
- ◆ 5 000 m² steelworks factory

QUALITY ASSURANCE

- ◆ Materials manufactured or sourced to exacting quality, safety and climatic durability standards
- ◆ Revolutionary Eton canvas manufacturing system provides real time data collection and information resulting in improved production quality, reduced through-put times, optimal workflow and increased design flexibility
- ◆ World-class R&D and quality testing laboratory
- ◆ Our self-invented Rain Tester deluges tents with 750l of water over a specific time period – we thus guarantee that our tents are waterproof, even in a monsoon or tropical storm
- ◆ Guaranteed workmanship, product and part warranties



Belmond Safari Savute Elephant Camp - Botswana ©Photo by Mark Williams

WE NEVER REPLICATE

Our goal is to always create something unique that incorporates and honours our client's vision while surprising and delighting them with something unexpected.

- ◆ Award-winning in-house design and engineering team
- ◆ Thorough pre-consult research of prospective client's needs and proposed location
- ◆ Collaborative design approach
- ◆ In-depth assessment of client needs
- ◆ In tune with, but not dictated by, design trends

CONCEPT & DESIGN



Settlers Drift - Kariega - South Africa

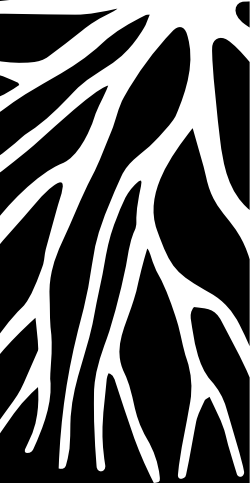


Goo-Moremi Gorge - Botswana

TENT FEATURES

Whether a customisable ready-to-go design or a one-of-a kind bespoke creation, each luxury tent is as functional and durable as it is beautiful ...

- ◆ Up to four-layered roof to optimise ventilation
- ◆ Galvanised, powder coated, or stainless steel framing
- ◆ Durable Riptech™ canvas body
- ◆ Large shade-net windows with outer storm flaps
- ◆ Velcro zipper doors for easy maintenance
- ◆ Body poles and webbing straps
- ◆ UV-resistant, insulated, rot proof, waterproof and can be fire-retardant



FULLY INTEGRATED TURNKEY SOLUTION

- ◆ Advisement and consultancy service – all camp design, construction and installation elements, incl décor
- ◆ Air conditioning/ventilation/heating and cooling systems
- ◆ Back-of-house solutions - staff accommodation, kitchens, laundry and storage
- ◆ Basic civils
- ◆ Camp concept, design and planning
- ◆ Construction
- ◆ Electrical distribution system
- ◆ Flooring and decking
- ◆ Installation
- ◆ Interior décor, fittings and furnishings
- ◆ Maintenance service and training
- ◆ Plumbing and ablutions
- ◆ Potable water system (filtration, reverse osmosis or desalination)
- ◆ Power generation or on grid
- ◆ Project management
- ◆ Sewage and waste water drainage system and treatment
- ◆ Site research and preparation
- ◆ Transport and logistics
- ◆ Obligation-free consultation at the Canvas and Tent office park in Centurion or via Skype



&Beyond Ngala Tented Camp - South Africa



Old Drift Lodge - Victoria Falls - Zimbabwe

CONSTRUCTION AND INSTALLATION

- ◆ Installation team has over 30 years' local and international experience
- ◆ Trusted relationships with contractors, suppliers and artisans to minimise delays and maintain standards
- ◆ Dedicated on-site project manager
- ◆ Follow-up site visits/inspections as per agreement with client
- ◆ Utilise and upskill local workforce where possible
- ◆ Use of local materials and suppliers to reduce transport and import costs and minimise carbon footprint and uplift communities where possible
- ◆ Proven packaging/crating methods to minimise damages

MAINTENANCE SERVICE/TRAINING

- ◆ Full maintenance service with regular on-site inspections to maintain health, hygiene, safety and operational standards, preserve camp aesthetics and extend its lifespan and ROI
- ◆ For camp managers and staff who prefer to handle it in-house, we offer the necessary training and reference manual covering vital daily, monthly and annual maintenance checklists and procedures

DESIGNED TO IMPRESS

- ◆ Walk through our on-site camp and experience our magnificent tents live and up close
- ◆ Take a virtual tour of our fascinating factory and watch the tent creation process from a simple sketch to finished product – the video link is on our home page - www.bushtecsafari.co.za

BE INSPIRED BY OUR 360° PANORAMIC VIDEOS

We've created unforgettable tented destinations on water, rocks, deserts, savannahs, beaches, mountains and rain forests.

Visit www.bushteccreations.com and click on **Project Showcase**



Goo-Moremi Gorge - Botswana



LUXURY
tent range

BALI

luxury tent

STANDARD FEATURES

- ◆ Mild steel frame
- ◆ Canvas flysheet
- ◆ Canvas tent body – 550 GSM ripstop canvas
- ◆ Bull denim inner ceiling
- ◆ Bull denim curtains
- ◆ Square tubing, body poles and webbing straps

ADDED FEATURES

- ◆ Powder coated, galvanised or stainless steel frame
- ◆ Wooden or aluminium doors





IJUBA

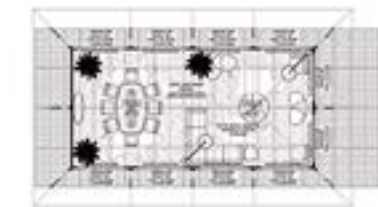
luxury tent

STANDARD FEATURES

- ◆ Mild steel frame
- ◆ Canvas flysheet
- ◆ Canvas tent body – 550 GSM ripstop canvas
- ◆ Bull denim inner ceiling
- ◆ Bull denim curtains
- ◆ Square tubing, body poles and webbing straps

ADDED FEATURES

- ◆ Powder coated, galvanised or stainless steel frame
- ◆ Wooden or aluminium doors
- ◆ Shade-net flysheet



JABULELA

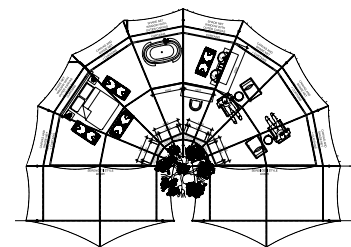
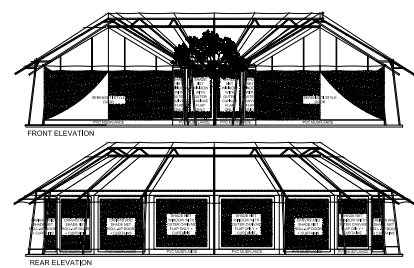
luxury tent

STANDARD FEATURES

- ◆ Mild steel frame
- ◆ PVC flysheet
- ◆ Shade-net flysheet
- ◆ Canvas tent body – 550 GSM ripstop canvas
- ◆ Bull denim inner ceiling
- ◆ Bull denim curtains
- ◆ Square tubing, body poles and webbing straps

ADDED FEATURES

- ◆ Powder coated, galvanised or stainless steel frame
- ◆ Wooden or aluminium doors



JAMA

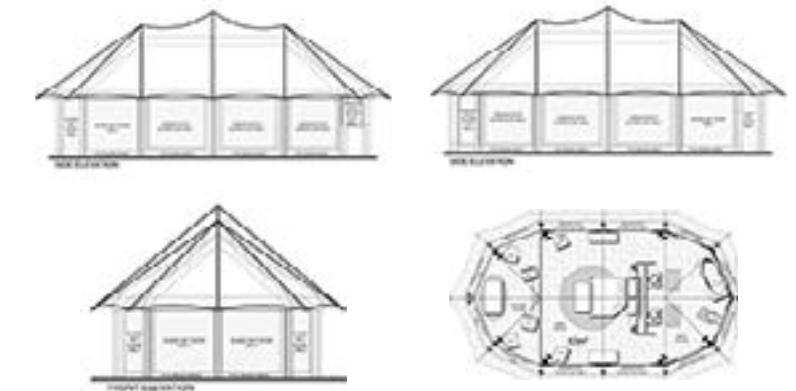
luxury tent

STANDARD FEATURES

- ◆ Mild steel frame
- ◆ PVC flysheet
- ◆ Shade-net flysheet
- ◆ Canvas tent body – 550 GSM ripstop canvas
- ◆ Bull denim inner ceiling
- ◆ Bull denim curtains
- ◆ Square tubing, body poles and webbing straps

ADDED FEATURES

- ◆ Powder coated, galvanised or stainless steel frame
- ◆ Wooden or aluminium doors



JAVA

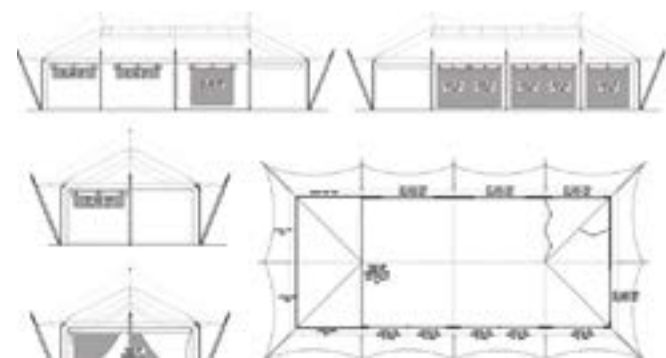
luxury tent

STANDARD FEATURES

- ◆ Mild steel frame
- ◆ Wooden outrigger poles with sisal rope
- ◆ Canvas flysheet – 550 GSM ripstop canvas
- ◆ Canvas tent body – 550 GSM ripstop canvas
- ◆ Bull denim inner ceiling
- ◆ Bull denim curtains
- ◆ Square tubing, body poles and webbing straps

ADDED FEATURES

- ◆ Powder coated, galvanised or stainless steel frame
- ◆ Wooden or aluminium doors
- ◆ Shade-net flysheet





MAHE

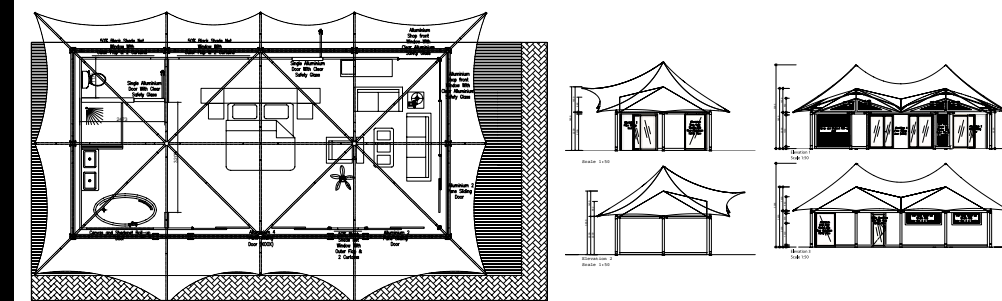
luxury tent

STANDARD FEATURES

- ◆ Mild steel frame
- ◆ Ferrari PVC flysheet
- ◆ Canvas tent body – 550 GSM ripstop canvas
- ◆ Bull denim inner ceiling
- ◆ Bull denim curtains
- ◆ Square tubing, body poles and webbing straps

ADDED FEATURES

- ◆ Timber beams
- ◆ Powder coated, galvanised or stainless steel frame
- ◆ Wooden or aluminium doors



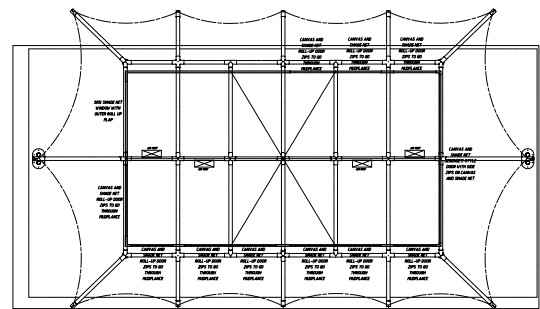
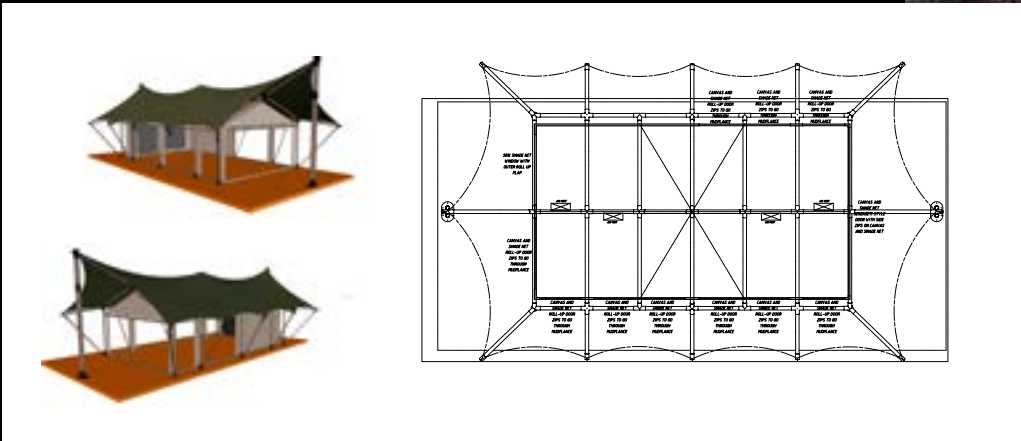
SERENGETI
luxury tent

STANDARD FEATURES

- ◆ Complete turned wooden pole structure
- ◆ Mild steel corner fittings and foot brackets
- ◆ Wooden outriggers
- ◆ Canvas flysheet – 550 GSM ripstop canvas
- ◆ Canvas tent body – 550 GSM ripstop canvas
- ◆ Bull denim inner ceiling
- ◆ Bull denim curtains
- ◆ Square tubing, body poles and webbing straps

ADDED FEATURES

- ◆ Powder coated, galvanised or stainless steel fittings
- ◆ Wooden or aluminium doors
- ◆ Shade-net flysheet



SHAKA

luxury tent

STANDARD FEATURES

- ◆ Mild steel frame
- ◆ PVC flysheet
- ◆ Shade-net flysheet
- ◆ Canvas tent body – 550 GSM ripstop canvas
- ◆ Bull denim inner ceiling
- ◆ Bull denim curtains
- ◆ Square tubing, body poles and webbing straps

ADDED FEATURES

- ◆ Powder coated, galvanised or stainless steel frame
- ◆ Wooden or aluminium doors



SPRINGBOK

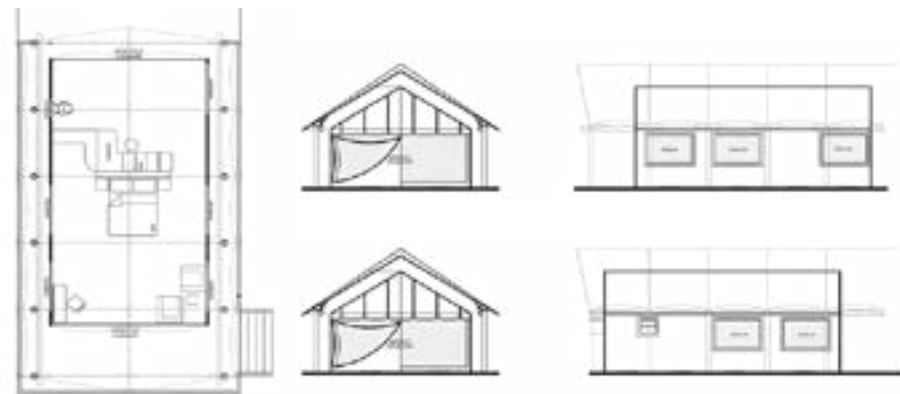
luxury tent

STANDARD FEATURES

- ◆ Mild steel frame to fit onto customer's gum pole structure
- ◆ PVC flysheet
- ◆ Shade-net flysheet
- ◆ Canvas tent body – 550 GSM ripstop canvas
- ◆ Bull denim inner ceiling
- ◆ Bull denim curtains
- ◆ Square tubing, body poles and webbing straps

ADDED FEATURES

- ◆ Powder coated, galvanised or stainless steel frame
- ◆ Wooden or aluminium doors



TSHOKWANE

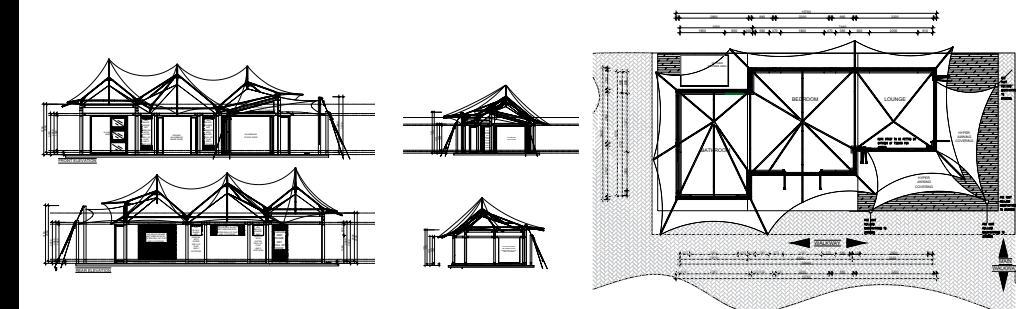
luxury tent

STANDARD FEATURES

- ◆ Mild steel frame
- ◆ Ferrari PVC flysheet
- ◆ Two PVC awnings
- ◆ Canvas tent body – 550 GSM ripstop canvas
- ◆ Bull denim inner ceiling
- ◆ Bull denim curtains
- ◆ Square tubing, body poles and webbing straps

ADDED FEATURES

- ◆ Timber beams
- ◆ Powder coated, galvanised or stainless steel frame
- ◆ Wooden or aluminium doors





MERU

tent range

This range is more of what you want, for less. Invest in the Meru Range of standard A-style framed tents. They're also an ideal solution for mobile camps and each tent can be customised to meet most requirements.

There are three standard frame sizes (frame length with flysheet for each tent) with all three tents available in three body sizes (any tent body size fits onto any frame):

FRAME SIZES	BODY SIZES
◆ 4 Leg – 6,3 m	◆ 3,5 x 3,5 m
◆ 5 Leg – 8,4 m	◆ 4,68 x 3,5 m
◆ 6 Leg – 10,5 m	◆ 5,22 x 3,5 m

STANDARD FEATURES

- ◆ Mild steel frame
- ◆ Double flysheet (PVC and shade-net)
- ◆ Heavy duty canvas inner tent
- ◆ Serengeti style (zipper) doors
- ◆ Option of adding hard doors
- ◆ Large shade-net windows with inner and outer flaps
- ◆ Optional bull denim inner liner and curtains
- ◆ Covered outside veranda
- ◆ Bedroom
- ◆ Optional en-suite canvas bathroom or built-on at the back
- ◆ Kitchenette
- ◆ Colour canvas of your choice, subject to a specific minimum quantity
- ◆ Full PVC floor for mobile tents



OUR RANGE OF STANDARD AND
FLAGSHIP LUXURY SAFARI TENTS
CAN BE CUSTOMISED TO YOUR
EXACT SPECIFICATIONS AND
REQUIREMENTS.

CHOOSE FROM OUR VARIOUS FEATURES
TO CUSTOMISE YOUR TENTED
ACCOMMODATION

- ◆ En-suite ablution facilities
- ◆ Tailored canvas bathroom with gauze roof
- ◆ Mild steel frame, option to fit onto your existing structure
- ◆ Square tubing
- ◆ PVC/shade-net flysheet
- ◆ Serengeti-style door (front/rear/both)
- ◆ Roll-up front door



STANDARD
luxury tent range

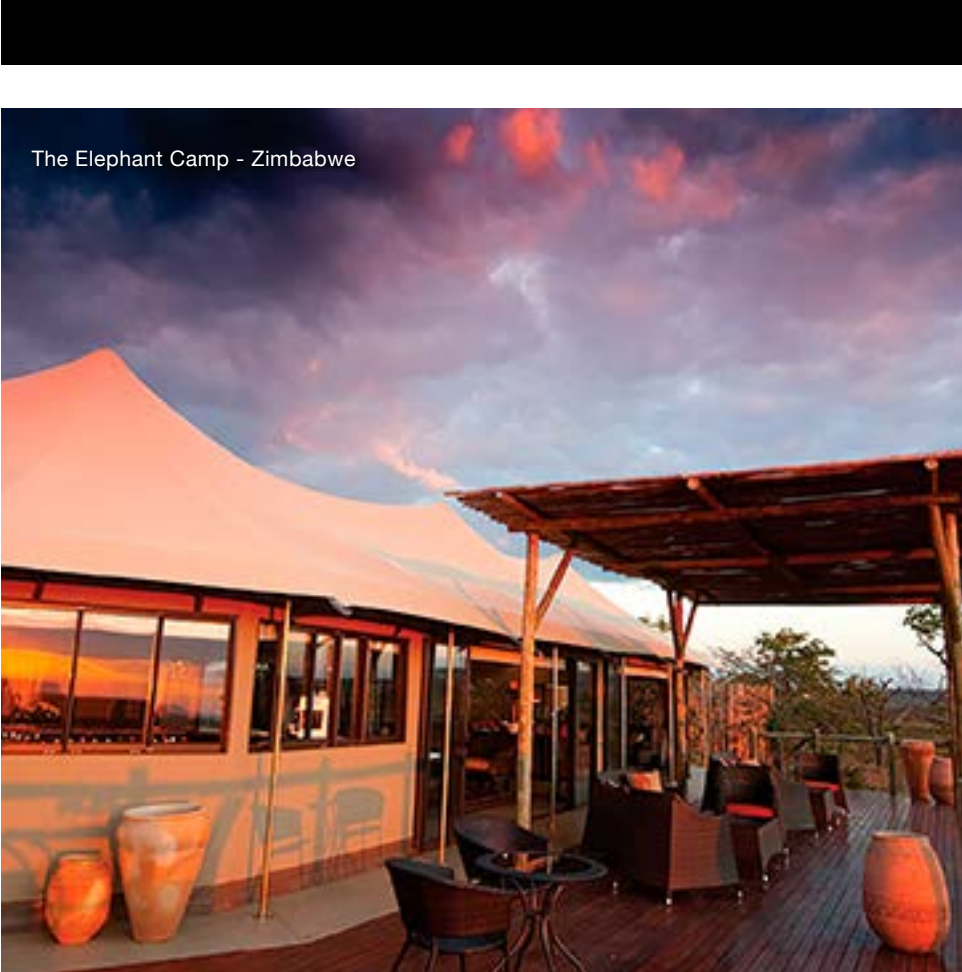
glimpse of luxury
PORTFOLIO



Simbavati Hilltop - Timbavati - South Africa



Tau Game Lodge - South Africa



The Elephant Camp - Zimbabwe



Old Drift Lodge - Victoria Falls - Zimbabwe



Muluwa Lodge - South Africa



Goo-Moremi Gorge - Botswana



Kasbah Tamadot Camp - Morocco

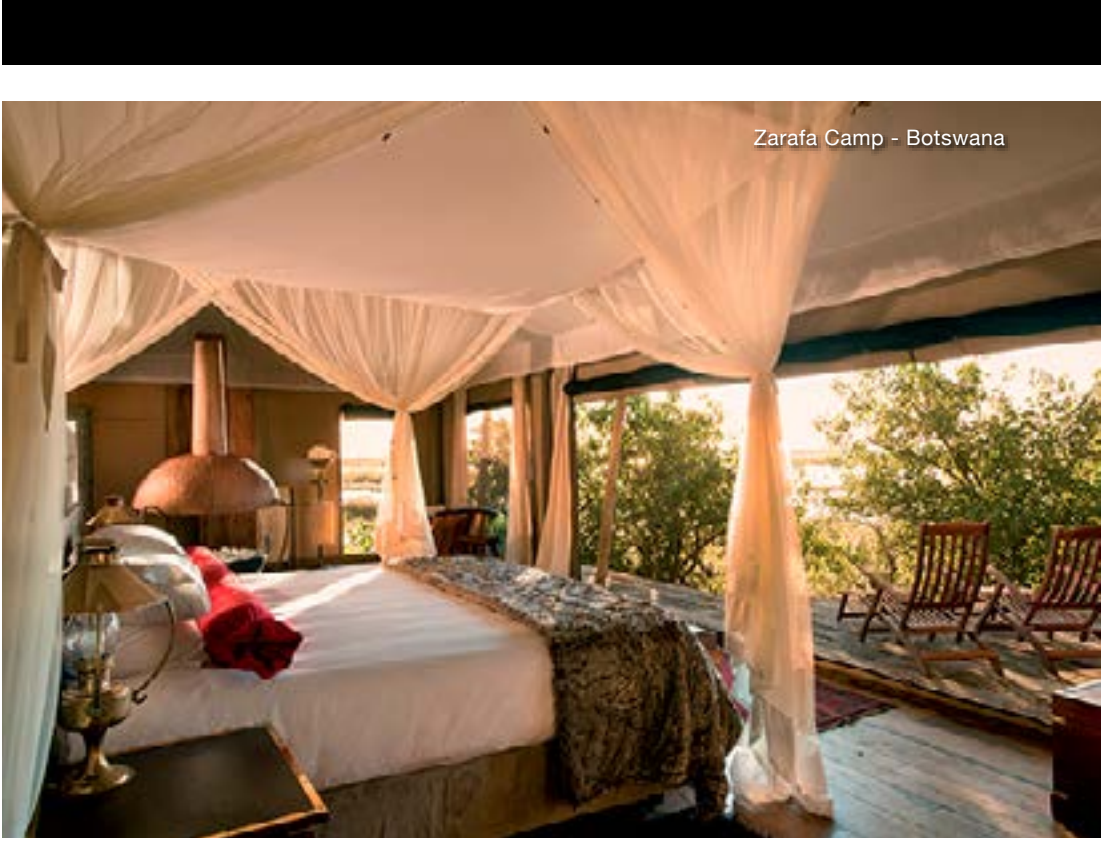




Old Drift Lodge - Victoria Falls - Zimbabwe



Abu Camp - Botswana



Zarafa Camp - Botswana



Turnkey Solutions Camp - Seychelles

Spitzkoppen Lodge - Namibia



Kwetsani Camp - Botswana



let's transform your
tented accommodation into

SOMETHING BREATHTAKING

Tel: +27 (0)12 671 1073/1117 | Fax: +27 (0)12 671 1438

Denel Business Park, Nellmapius Drive, Irene, Pretoria, South Africa

PO Box 556, Ladysmith, 3370, KwaZulu-Natal, South Africa

Canvas and Tent Europe: Marc van den Bosch – marc@lpi.be

Canvas and Tent USA: Gary Flaks – info@bushtecsafari.com

Kalahari Canvas Botswana: Brett Sinclair - info@kalahari-kanvas.com

Canvas and Tent Manufacturing (Pty) Ltd
Co. Registration 96/14167/07 • Vat Reg No. 4500161379

SACAS
ISO 14001:2015

SACAS
ISO 9001:2015


BUSHTEC
SAFARI

DESIGNED TO IMPRESS. BUILT TO LAST.

a CANVAS AND TENT company | www.bushtecsafari.co.za | info@bushtecsafari.co.za

Kwetsani Camp - Botswana


BUSHTEC
SAFARI